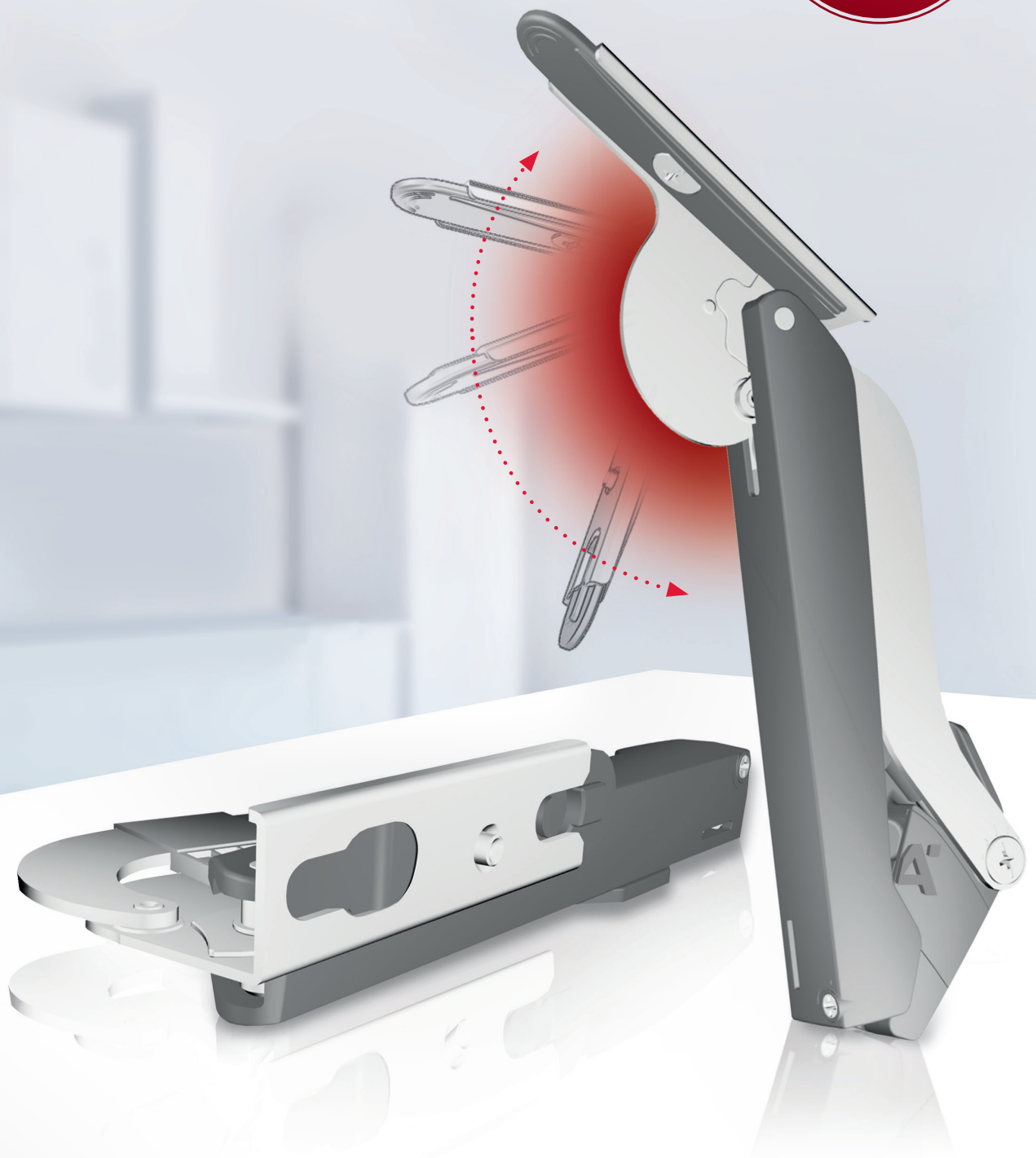


HÄFELE

MORE FREEDOM. FREE SPACE.

THE CLEVEREST COMBINATION
OF LESS AND MORE.

COMPACT
STRONG
EFFICIENT







COMPACT

STRONG

EFFICIENT

ELEGANCE FOR ANY FLAP.

SMALL AND STRONG
FOR MORE FREEDOM IN
FURNITURE CONSTRUCTION.
ENGINEERED BY HÄFELE.

Flaps allow for a more beautiful and functional design of upper cabinets. Up until now, flaps have been used in high-end furniture. With the new Free space Häfele offers an innovative stay flap fitting which, with its strong features, now also allows for use in furniture of all categories.

More than 90 years of experience with furniture fittings, engineering expertise, and a close connection to the market and the people who work with furniture fittings on a daily basis led to the development of Free space. Inspired by the requirements of the market of tomorrow. Free space fulfills all demands for creative freedom and choice of material, design, ease of installation and convenient operation on a new level.



reddot award 2019
winner



High product quality



LESS INSTALLATION DEPTH. MORE STORAGE SPACE.

Free space is characterised by an extremely compact size that goes hand in hand with a fine, understated, yet distinctive design.

This “less” creates “more” room and storage space in furniture, eliminates the need for large cover caps, and also opens up new freedom for modern furniture design such as convenient flaps for shallow cabinet depths.



Size of conventional
flap fittings

COMPACT

STRONG

EFFICIENT

FREE SPACE

is available in the standard colours, white, light grey, anthracite and as black edition.



LESS MODELS. MORE APPLICATIONS.

Load bearing capacity up to 10.7 kg
with cabinet height of 400 mm



COMPACT

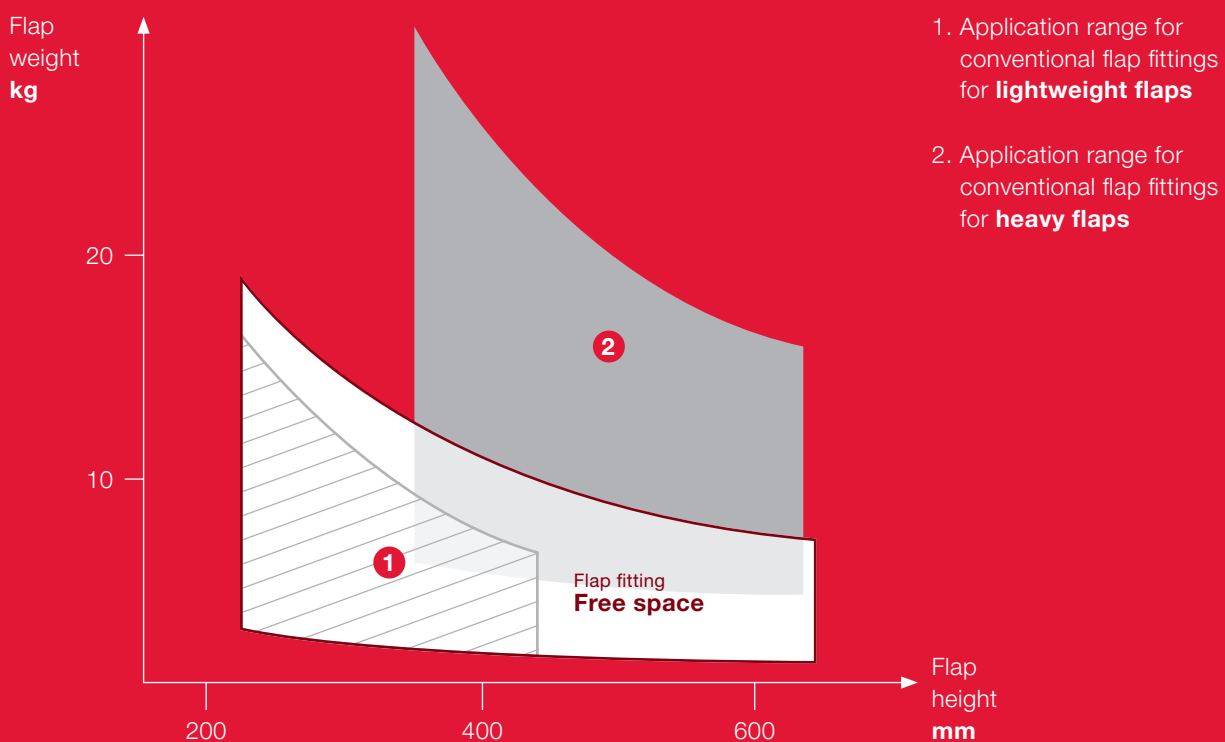
STRONG

EFFICIENT

Free space, across its different model variants, is characterised by a unique performance capability, covering up to 80 % of all common stay flap applications. This “more” thus allows using the same product series for a much wider range of applications than previous hingeless stay flap fittings.

Free space can be used for flaps with or without furniture handle:

- > Model series **Free space 1.11** for flaps with handles
- > Model series **Free space 1.8 push** for flaps without handle with Push-to-Open function; the associated push catches are colour matched to the Free space fittings



LESS PARTS. MORE PRODUCTIVITY.



As the “smartest combination of less and more”, Free space on the one hand enables a very high degree of standardisation in production and, on the other hand, noticeably conserves resources in transport and logistics.

COMPACT

STRONG

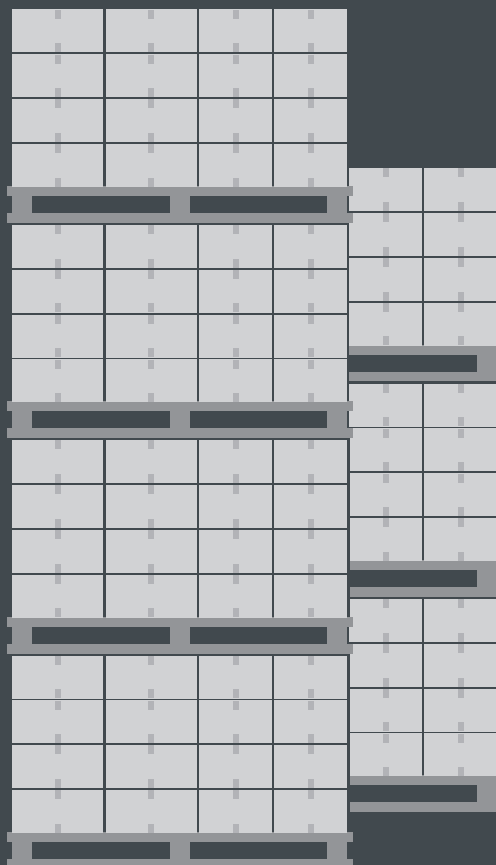
EFFICIENT

LESS STORAGE AREA. MORE SPACE.

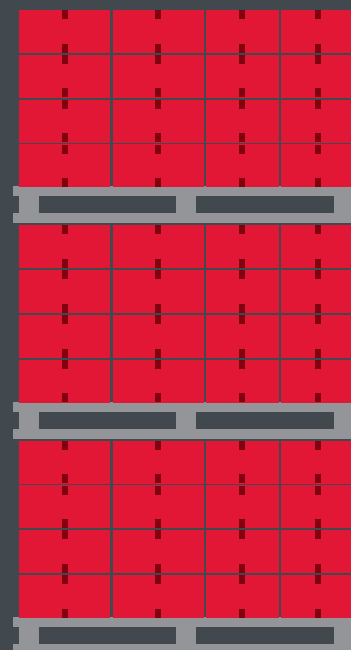
Fewer individual parts ...
that means: Clear order lists
and simplified warehousing.

More packaging units per lorry ...
= fewer trips
= less CO₂ emissions.

50 % savings ...
in packaging, storage,
and transport.



> Conventional flap fitting



> Free space



FREE SPACE.

MORE FREEDOM.

- > For flaps up to 650 mm height.
- > Extremely compact dimensions for cabinets with internal depths from 63 mm.
- > For flaps with handle and flaps without handle with Push opening.
- > For opening angles of 90° or 107°.
- > Adjustment of height, side, tilting angle, and holding power possible.

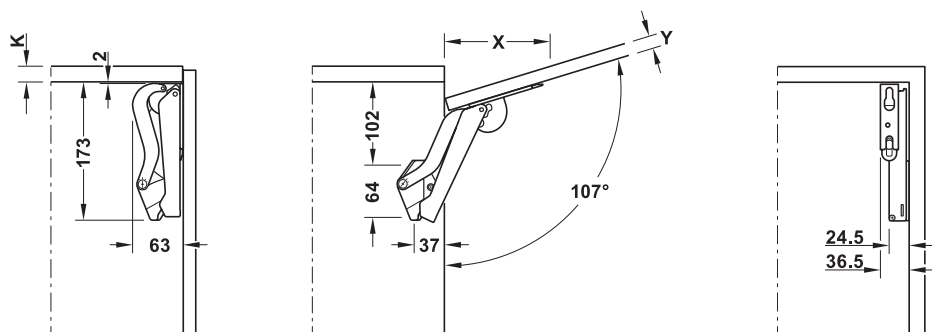


FREE SPACE.

TECHNICAL DATA.

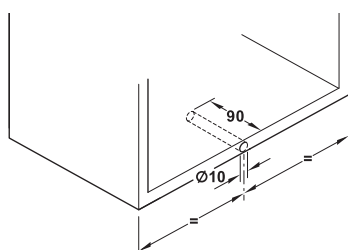


Planning Free space 1.11 and Free space 1.8 push



Front panel thickness Y mm	16	18	19	22	24	26	28
Distance X mm (with cabinet top panel thickness 16 mm)	117	110	107	96	90	83	76

Planning push catch for Free space 1.8 push



Free space 1.11



Model	white	light grey	anthracite	black
B	372.27.700	372.27.500	372.27.350	372.27.300
C	372.27.701	372.27.501	372.27.351	372.27.301
D	372.27.702	372.27.502	372.27.352	372.27.302
E	372.27.703	372.27.503	372.27.353	372.27.303
F	372.27.704	372.27.504	372.27.354	372.27.304

Model Häfele Free Space 1.11	B	C	D	E	F
Cabinet height (mm)	Flap weight (kg)				
225	2,3-4,3	3,8-7,1	6,4-9,3	9,2-13,4	13,4-19,1
250	1,9-3,9	3,4-6,4	5,8-9,1	8,3-12,6	12,1-17,2
300	1,7-3,2	2,8-5,3	4,8-7,5	6,9-11,0	10,1-14,3
350	1,5-2,8	2,4-4,6	4,1-6,5	5,9-9,5	8,6-12,3
400	1,2-2,4	2,1-4,0	3,6-5,6	5,2-8,3	7,6-10,7
450	1,0-2,1	1,9-3,5	3,2-5,0	4,6-7,3	6,7-9,5
500	0,9-1,9	1,7-3,2	2,9-4,5	4,1-6,6	6,0-8,6
550	0,8-1,7	1,5-2,9	2,6-4,1	3,7-6,0	5,5-7,8
600	0,8-1,6	1,4-2,7	2,4-3,7	3,4-5,5	5,0-7,1
650	0,7-1,5	1,3-2,4	2,2-3,5	3,2-5,1	4,6-6,6

Free space 1.8 push



Model	white	light grey	anthracite	black
B pto	372.27.705	372.27.505	372.27.355	372.27.305
C pto	372.27.706	372.27.506	372.27.356	372.27.306
D pto	372.27.707	372.27.507	372.27.357	372.27.307
E pto	372.27.708	372.27.508	372.27.358	372.27.308

Model Häfele Free space 1.8 push	B pto	C pto	D pto	E pto
Cabinet height (mm)	Flap weight (kg)			
225	2,3-4,3	3,8-7,1	6,4-9,3	9,2-13,4
250	1,9-3,9	3,4-6,4	5,8-9,1	8,3-12,6
300	1,7-3,2	2,8-5,3	4,8-7,5	6,9-11,0
350	1,5-2,8	2,4-4,6	4,1-6,5	5,9-9,5
400	1,2-2,4	2,1-4,0	3,6-5,6	5,2-8,3
450	1,0-2,1	1,9-3,5	3,2-5,0	4,6-7,3
500	0,9-1,9	1,7-3,2	2,9-4,5	4,1-6,6
550	0,8-1,7	1,5-2,9	2,6-4,1	3,7-6,0
600	0,8-1,6	1,4-2,7	2,4-3,7	3,4-5,5
650	0,7-1,5	1,3-2,4	2,2-3,5	3,2-5,1

Dimensional data not binding. We reserve the right to alter specifications without notice. Other technical data and accessories can be found the "The Complete Häfele" catalogue or at www.hafele.com

NEW FREEDOM IN MOTION. FREE.

THE HÄFELE **FLAP FITTING** PRODUCT RANGE.

ELEGANT MOTION IN THE ROOM.

> **Free swing**

HINGE AND LID
STAY IN ONE.

> **Free flap**



THE ELEGANT
ALL-PURPOSE FITTING.

> **Free flap H 1.5**





The new Free space builds on the outstanding product features of the existing Free family and, with its unique design, offers “the smartest combination of less and more” in the global furnishing market.

MAXIMUM ACCESS
TO THE CABINET.

> Free up



MINIMAL SPACE REQUIREMENT.

> Free fold

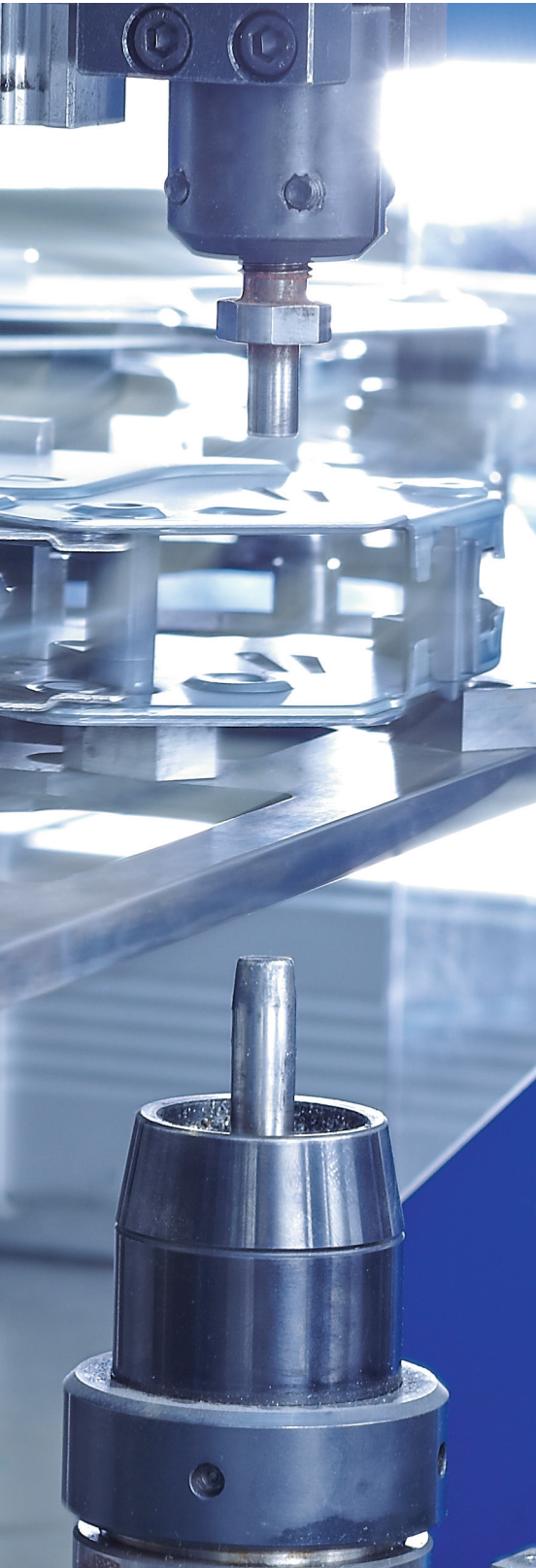
The brochure for the
complete **FREE FAMILY**
Cat. No. 732.02.700



EXPERIENCE TURNS TO EXPERTISE.

QUALITY WITHOUT COMPROMISE. ENGINEERED BY HÄFELE.





“The Complete Häfele” is a well-known term in the industry: It represents over 90 years of comprehensive experience with furniture fittings. Today, Häfele stands for even more. The expanded engineering expertise and the constant drive to think ahead lead to innovative solutions for the market of today and tomorrow.

The many years of experience with the Free flap family formed the basis for the next innovative technology step towards Free space.

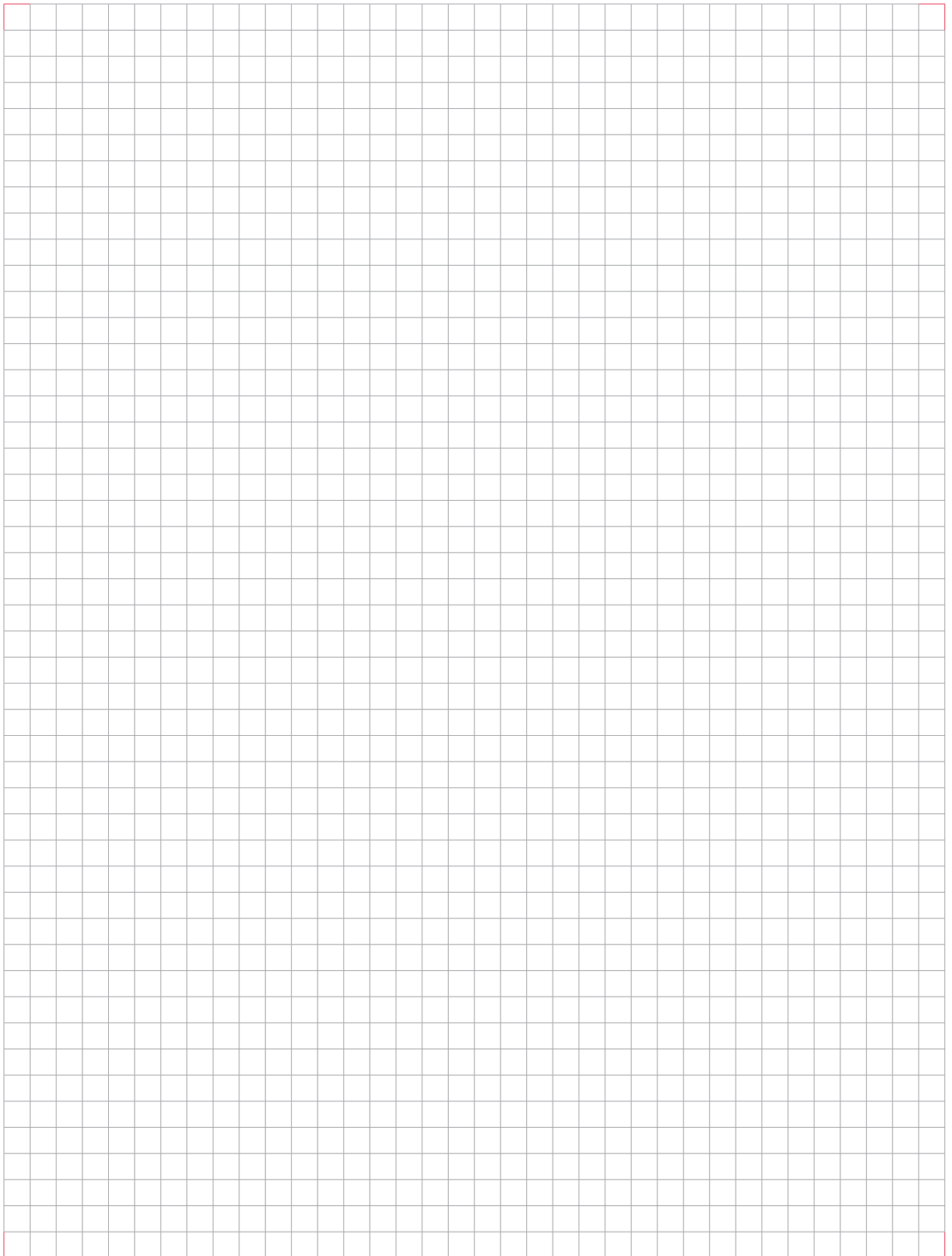
A new production hall, fully automated production facilities, and state-of-the-art standards form the basis for reliable production. Experienced development engineers in the plant ensure qualitative continuity. The goal is to connect the opening and closing of cabinets with a feeling of luxury and reliability. Engineered by Häfele.



Stress tests in heat and cold under continuous use ensure high quality.



NOTES.



HÄFELE

732.02.211-02/20-5-sys
www.hafele.com